

Patented

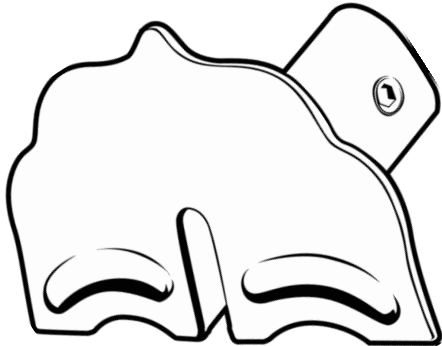
# SNOW DEFENDER™

# 6500

## Installation Instructions

The Snow Defender® 6500 is for standing seam roofing only. It is designed to fit standing seam panels in seam width up to 3/8" and most 1" to 1 -3/4" high. It is not designed for seams below 1". Using a 7/32" hex bit unscrew the set screws till they are flush on the inside wall. Place the guard on the seam of the roof. The snow guard blade needs to be towards the eave. With your hand, apply even pressure on the top of the 6500. Torque all set screws in an alternate fashion. Set screws are to be torqued to 220 inch pounds.

Towards ridge



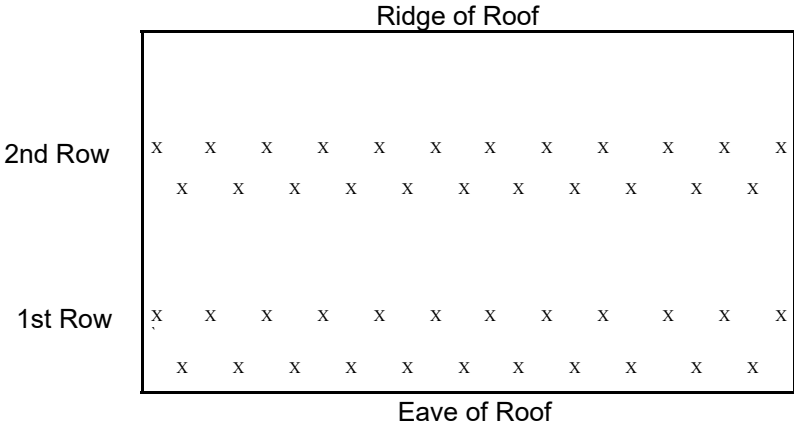
*Note: Most electric & cordless drills will not achieve 220 inch pounds. It is recommended to use a torque wrench.*

Face plate towards the eave.

*Failure to install an adequate amount of snow guards and in the proper pattern will void the warranty. Visit [www.snowdefendercalculator.com](http://www.snowdefendercalculator.com) to use our snow guard calculator to determine the amount needed.*



For warranty details visit [www.levisbuildingcomponents.com/warranties](http://www.levisbuildingcomponents.com/warranties)



*Above example is based on Metal Roof Panels being 26" Panels with 9" rib spacing.*

**It is recommended to install the guards in a staggered pattern. For example, install 1 every 18" on the first purlin and moving up to the next purlin install the next row every 18" between the first row, so you will have 1 guard every 9" in a staggered pattern.**

**If required repeat the pattern in Row 2. Do not exceed 15 feet vertically between Rows 1 and 2. For Example: if your roof sheets are 26 feet long, your roof would require a row at 18" from the bottom and at 13 feet up from the bottom. When possible, always attempt to divide the roof areas into equal sections, with equal distance between rows.**

**Remember it is very important to install the guards properly with the correct quantities. Do not only put snow guards over doorways, walkways, etc.**



400 Burkholder Dr  
Ephrata, PA 17522  
877-897-7020

[www.levisbuildingcomponents.com](http://www.levisbuildingcomponents.com)